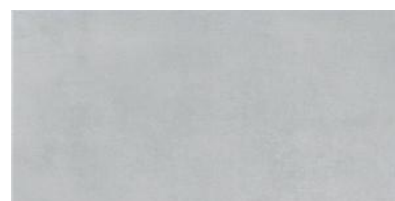



## TECHNICAL FEATURES

MODEL: <b>AT.BLAZE CENIZA</b>
SIZE: <b>30,3x61,3</b>
THICKNESS(mm): <b>9</b>
DATE: <b>04/11/2024</b>
CODE: <b>015.722.0019.03677</b>
GROUP: <b>GRUPO B1a UNE-EN 14411 Anexo G / SASO GSO ISO 13006:2022 Anexo G</b>
TILE TYPE: <b>GL</b>
FINISH: <b>MATT</b>
FAMILY: <b>GLAZED PORCELAIN TILES</b>
NUMBER OF DESIGNS: <b>8</b>



TEST	RESULT	
<b>UNE-EN ISO 10545-2</b> DIMENSIONAL FEATURES	<b>COMPLIES WITH THE STANDARD</b>	
<b>UNE-EN ISO 10545-3</b> WATER ABSORPTION	<b>&lt;= 0,5 %</b>	
<b>UNE-EN ISO 10545-4</b> MODULUS OF RUPTURE - BREAKING STRENGTH	<b>1600-2400 N</b>	
	MODULUS OF RUPTURE - BENDING STRENGTH	<b>35-45 N/mm2</b>
<b>UNE-EN ISO 10545-6</b> RESISTANCE TO DEEP ABRASION (MM3)	<b>NOT APPLY</b>	
<b>UNE-EN ISO 10545-7</b> RESISTANCE TO SURFACE ABRASION	<b>PEI IV</b>	
<b>UNE-EN ISO 10545-8</b> LINEAR THERMAL EXPANSION	<b>&lt;7,0 x 10-6 °C-1</b>	
<b>UNE-EN ISO 10545-9</b> THERMAL SHOCK RESISTANCE	<b>RESISTS</b>	
<b>UNE-EN ISO 10545-11</b> CRAZING RESISTANCE	<b>RESISTS</b>	
<b>UNE-EN ISO 10545-12</b> FROST RESISTANCE	<b>RESISTS</b>	
<b>UNE-EN ISO 10545-13</b>	CHEMICAL RESISTANCE - AMMONIUM CHLORIDE 100 G/L	<b>A</b>
	CHEMICAL RESISTANCE - SODIUM HYPOCHLORITE 20 MG/L	<b>A</b>
	CHEMICAL RESISTANCE - HYDROCHLORIC ACID 3%	<b>COMPLIES WITH THE STANDARD</b>
	CHEMICAL RESISTANCE - CITRIC ACID 100 G/L	<b>COMPLIES WITH THE STANDARD</b>
	CHEMICAL RESISTANCE - POTASSIUM HYDROXYDE 30 G/L	<b>COMPLIES WITH THE STANDARD</b>
<b>UNE-EN ISO 10545-14</b>	STAIN RESISTANCE - GREEN AGENT IN LIGHT OIL	<b>5</b>
	STAIN RESISTANCE - IODINE SOLUTION IN ALCOHOL	<b>5</b>
	STAIN RESISTANCE - OLIVE OIL	<b>5</b>

SLIP RESISTANCE

	TEST		RESULT
	UNE 41901:2017 EX	SLIP RESISTANCE (PENDULUM)	CLASE 1
	DIN 51130	CRITICAL ANGLE OF SLIP (INCLINED PLATFORM)	R9
	DIN 51097	CRITICAL ANGLE OF SLIP. WET-LOADED BAREFOOT AREAS	B
	BS7976 (PTV) WET	CLASSIFICATION ACCORDING TO PENDULUM TEST VALUES (PTV) WET	-
	ANSI A326.3	DYNAMIC COEFFICIENT OF FRICTION (DCOF) OF RIGID FLOORS.	-

TEST		VALOR UPEC
<u>UPEC</u>	UPEC CERTIFICATION	-

Declaration of Performance:

[https://www.pamesa.com/ERP/4.0/empresas/151/045/ficheros/t00030006/113/DdP\\_DoP\\_N003CPR2013.pdf](https://www.pamesa.com/ERP/4.0/empresas/151/045/ficheros/t00030006/113/DdP_DoP_N003CPR2013.pdf)

TECHNICAL DEPARTMENT  
PAMESA CERÁMICA