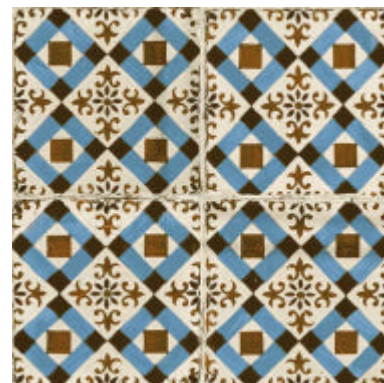


peronda

FS-4

Model: **FS-4**
Reference: **12541**
Size: **45X45** cm
Thickness: **10,5000** mm
Finish: **Natural**
Material: **PAVIMENTO GRES - GRUPO Blla -**



Water absorption

EN ISO-10545-3	Water absorption	3% < E < 6%
----------------	------------------	-------------

Dimensional characteristics

EN ISO-10545-2	Surface appearance	> 95%
EN ISO-10545-2	Curvature	± 0,5 % / ± 2,0 mm
EN ISO-10545-2	Thickness	± 5% / ± 0,5 mm
EN ISO-10545-2	Length	± 0,6 % / ± 2,0 mm
EN ISO-10545-2	Squareness	± 0,5% / ± 2,0 mm
EN ISO-10545-2	Straightness of sides	± 0,5 % / ± 1,5 mm

Mechanical characteristics

EN ISO 10545-11	Resistance to crazing	Cumple
EN ISO 10545-9	Thermal shock resistance	Cumple
EN ISO-10545-4	Breaking strength	> 1000 N
EN ISO-10545-4	Bending strength	> 22 N/mm ²

Surface characteristics

EN ISO 10545-7	Bending strength	4
EN ISO 10545-7	Visible effect at revolutions	2100 rev.
EN-101	Scratch resistance	6

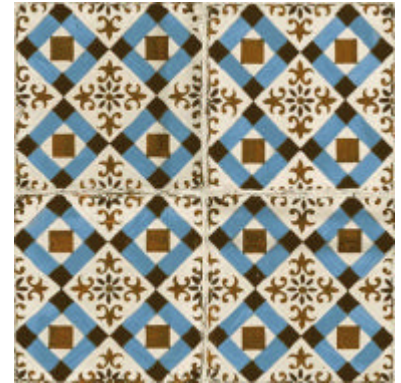
Chemical characteristics

EN ISO-10545-13	Acids & alkalis at high concentrations	GHA/GHA/GHA
EN ISO-10545-13	Acids & alkalis at low concentrations	GLA/GLA/GLA
EN ISO-10545-13	Household cleaning products	GA/GA
EN ISO-10545-14	Stain resistance	5/-/5/5

peronda

FS-4

Model: **FS-4**
Reference: **12541**
Size: **45X45** cm
Thickness: **10,5000** mm
Finish: **Natural**
Material: **PAVIMENTO GRES - GRUPO BIIa -**



Non-slip characteristics

BS-7976-2	Stain resistance	+36
DIN-51130	Critical slip angle, shod foot on sloping ramp	R-9
UNE-ENV-12633	Critical slip angle, shod foot on sloping ramp	1

CE MARKING



CE Declaration of Performance: **005CPR2017-08-01**

Before laying the tiles, check the shade, calibre and quality. No claims will be accepted once the tiles have been laid. Leave a tile joint of at least 0.5 mm in the case of rectified tiles and 1.5 mm for non-rectified ones. The tile colour shown in this data sheet is merely indicative and it might differ from the real tile colour. This document is purely for sales purposes and it cannot be used in any legal or administrative proceedings, in a witness statement or as documentary proof without the express permission of