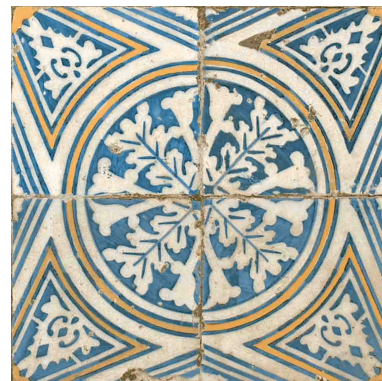


# peronda

## FS-1

Model: **FS-1**  
Reference: **12500**  
Size: **45X45** cm  
Thickness: **10,5000** mm  
Finish: **Natural**  
Material: **PAVIMENTO GRES - GRUPO Blla -**



### Water absorption

EN ISO-10545-3	Water absorption	<b>3% &lt; E &lt; 6%</b>
----------------	------------------	--------------------------

### Dimensional characteristics

EN ISO-10545-2	Surface appearance	<b>&gt; 95%</b>
EN ISO-10545-2	Curvature	<b>± 0,5 % / ± 2,0 mm</b>
EN ISO-10545-2	Thickness	<b>± 5% / ± 0,5 mm</b>
EN ISO-10545-2	Length	<b>± 0,6 % / ± 2,0 mm</b>
EN ISO-10545-2	Squareness	<b>± 0,5% / ± 2,0 mm</b>
EN ISO-10545-2	Straightness of sides	<b>± 0,5 % / ± 1,5 mm</b>

### Mechanical characteristics

EN ISO 10545-11	Resistance to crazing	<b>Cumple</b>
EN ISO 10545-9	Thermal shock resistance	<b>Cumple</b>
EN ISO-10545-4	Breaking strength	<b>&gt; 1000 N</b>
EN ISO-10545-4	Bending strength	<b>&gt; 22 N/mm2</b>

### Surface characteristics

EN ISO 10545-7	Wear resistance (PEI rating)	<b>4</b>
EN ISO 10545-7	Visible effect at revolutions	<b>2100 rev.</b>
EN-101	Scratch resistance	<b>6</b>

### Chemical characteristics

EN ISO-10545-13	Acids & alkalis at high concentrations	<b>GHA/GHA/GHA</b>
EN ISO-10545-13	Acids & alkalis at low concentrations	<b>GLA/GLA/GLA</b>
EN ISO-10545-13	Household cleaning products	<b>GA/GA</b>
EN ISO-10545-14	Stain resistance	<b>5/-/5/5</b>

# peronda

## FS-1

Model: **FS-1**  
Reference: **12500**  
Size: **45X45** cm  
Thickness: **10,5000** mm  
Finish: **Natural**  
Material: **PAVIMENTO GRES - GRUPO BIIa -**



### Non-slip characteristics

BS-7976-2	Slip resistance test (PTV) - wet conditions	<b>+36</b>
DIN-51130	Critical slip angle, shod foot on sloping ramp	<b>R-9</b>
UNE-ENV-12633	Critical slip angle, shod foot on sloping ramp	<b>1</b>

### CE MARKING



CE Declaration of Performance: **005CPR2017-08-01**

Before laying the tiles, check the shade, calibre and quality. No claims will be accepted once the tiles have been laid. Leave a tile joint of at least 0.5 mm in the case of rectified tiles and 1.5 mm for non-rectified ones. The tile colour shown in this data sheet is merely indicative and it might differ from the real tile colour. This document is purely for sales purposes and it cannot be used in any legal or administrative proceedings, in a witness statement, or as documentary proof without the express permission of PERONDA GROUP.